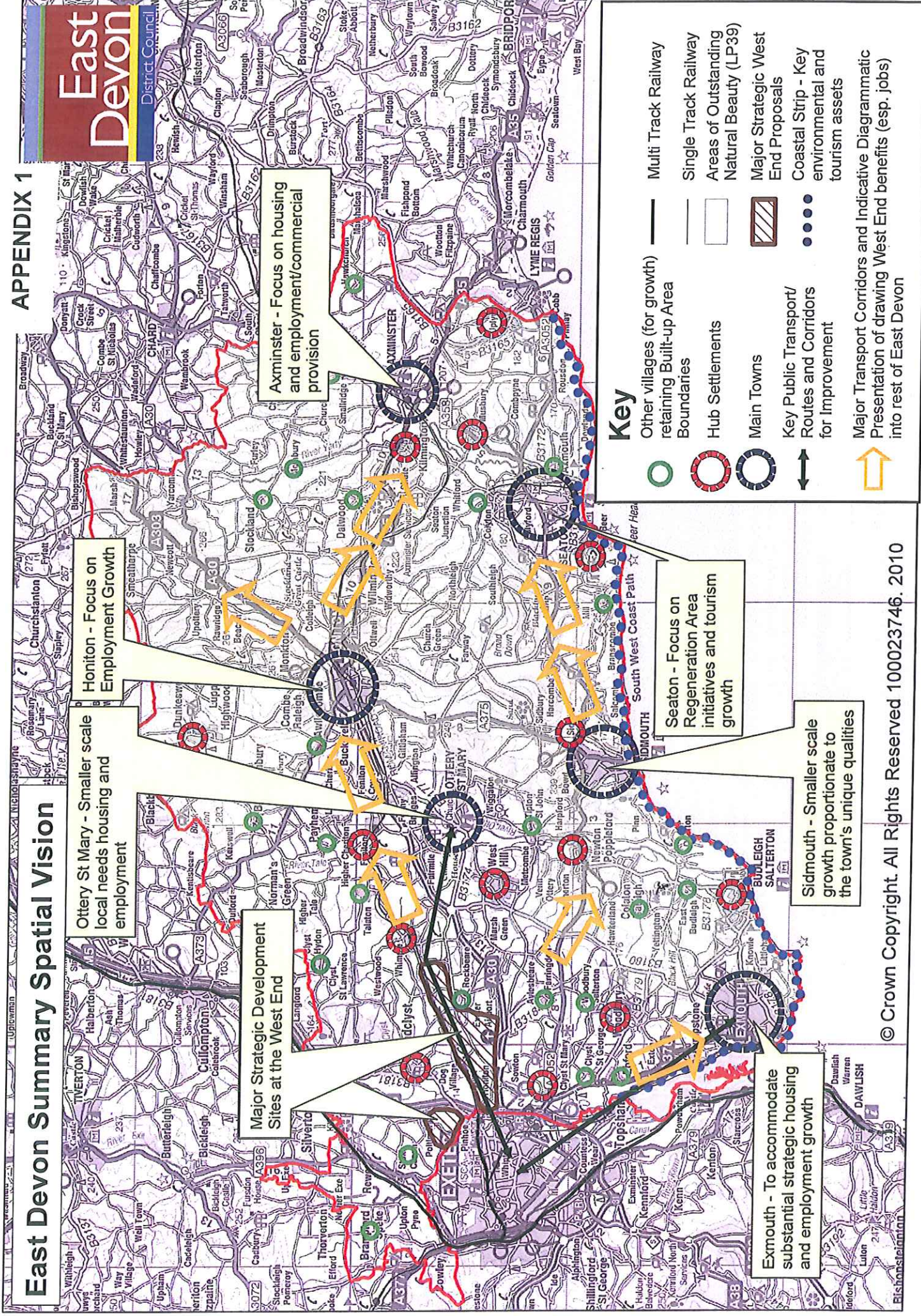
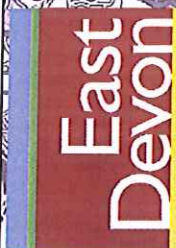


East Devon Summary Spatial Vision

APPENDIX 1



Ottery St Mary - Smaller scale local needs housing and employment

Honiton - Focus on Employment Growth

Major Strategic Development Sites at the West End

Axminster - Focus on housing and employment/commercial provision

Exmouth - To accommodate substantial strategic housing and employment growth

Seaton - Focus on Regeneration Area initiatives and tourism growth

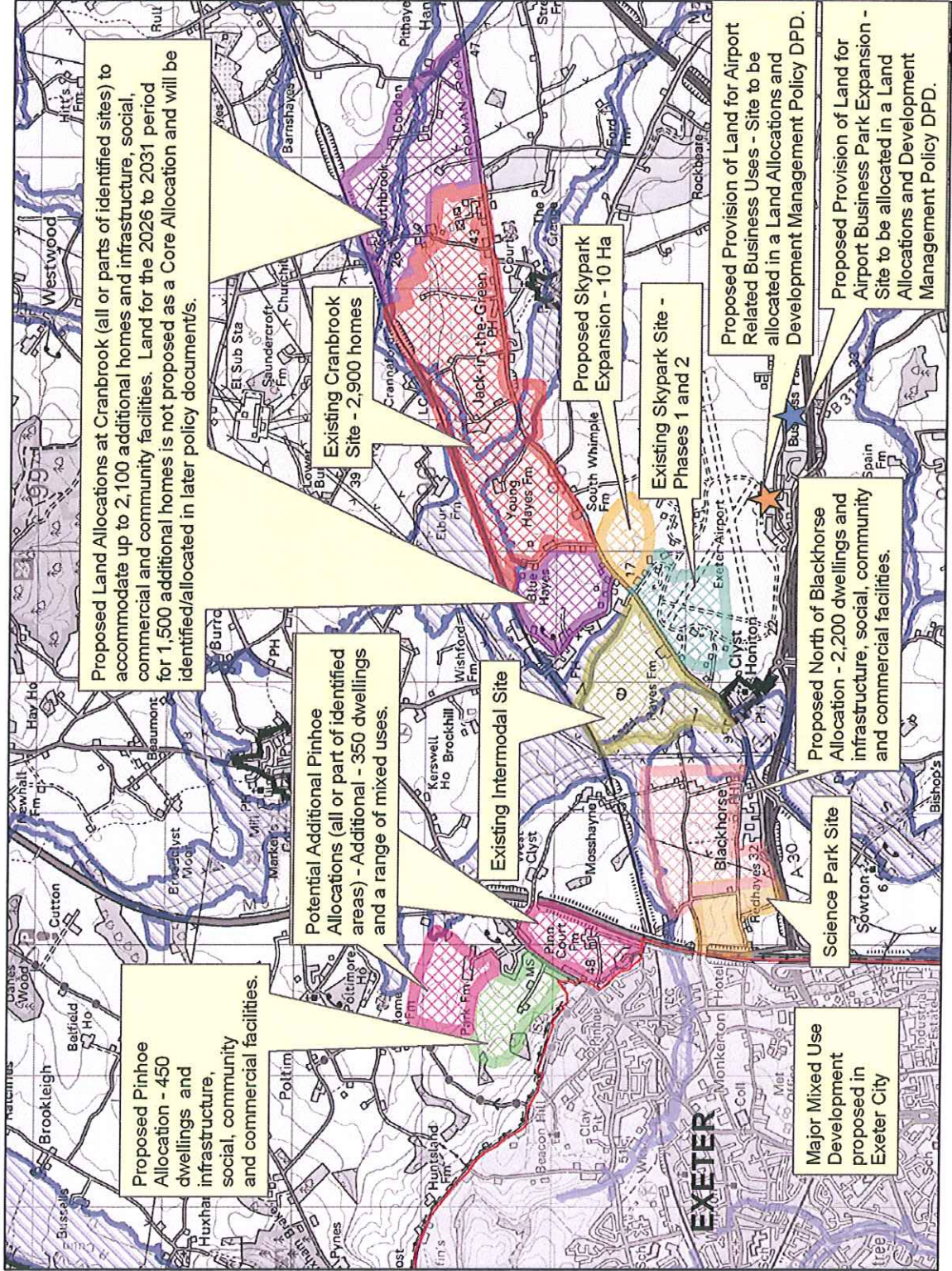
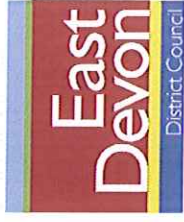
Sidmouth - Smaller scale growth proportionate to the town's unique qualities

Key

- Other villages (for growth) retaining Built-up Area
- Boundaries
- Hub Settlements
- Main Towns
- Key Public Transport/Routes and Corridors for Improvement
- Major Transport Corridors and Indicative Diagrammatic Presentation of drawing West End benefits (esp. jobs) into rest of East Devon
- Multi Track Railway
- Single Track Railway
- Areas of Outstanding Natural Beauty (LP39)
- Major Strategic West End Proposals
- Coastal Strip - Key environmental and tourism assets

East Devon Core Strategy - Preferred Approach Consultation - August 2010

East Devon's West End



1:41,215